

2010 IC/CE 200 – 53+2 PASSENGERS

CHASSIS

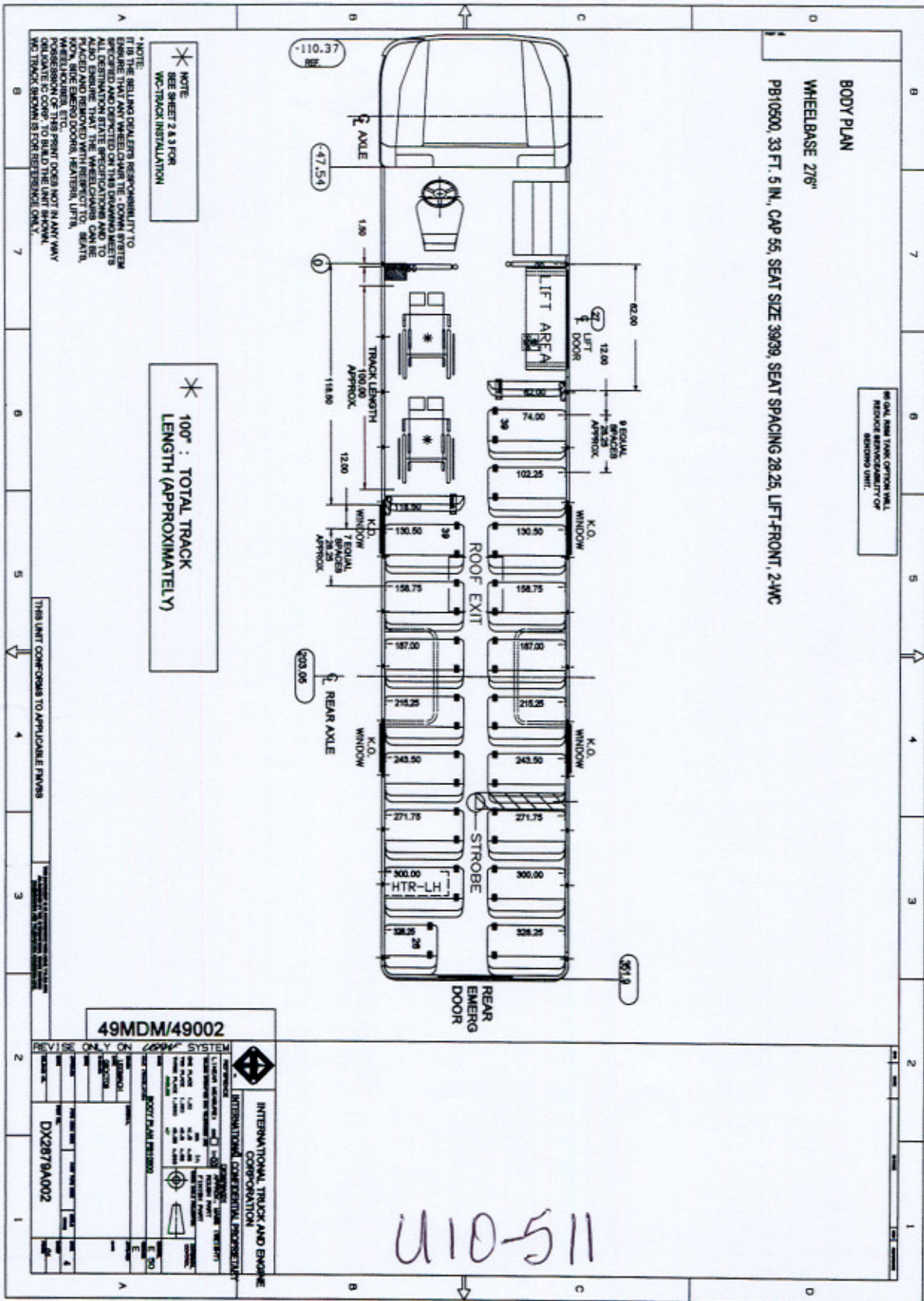
2010 IC/CE
EMMISSIONS COMPLIANT
276" WHEELBASE
50,000 PSI FRAME
MAXX FORCE 7 ELECTRONIC CONTROLLED
TURBO CHARGED / AFTER COOLED **DIESEL** ENGINE
215 HORSEPOWER / 560 FT/LB TORQUE
ALLISON 2500PTS TRANSMISSION
POWER STEERING
CRUISE CONTROL
TILT STEERING COLUMN
ANTILOCK HYDRAULIC BRAKES W/TRACTION CONTROL
DISC BRAKES FRONT AND REAR
12 X 3 BOSCH PARKING BRAKE W/WINTERLOCK
AUTOMATIC PARKING BRAKE CONTROL
FRONT WHEEL SEALS
10,000 # FRONT AXLE
10,000 # FRONT PARABOLIC TAPER LEAF SPRINGS
19,800 # REAR AXLE 5.29 RATIO
19,800 # REAR SUSPENSION VARIABLE RATE
FRONT & REAR SHOCK ABSORBERS
10R22.5G HANKOOK AH12 FRONT TIRES
10R22.5G HANKOOK DH01 REAR TIRES
22.5 x 7.50" HUB PILOTED DISC WHEELS
190 AMP LEECE NEVILLE ALTERNATOR
TRIPLE 12 VOLT BATTERIES – 1,950 CCA TOTAL
DELCO REMY STARTER
MANUAL RESET CIRCUIT BREAKERS
65 GALLON FUEL TANK WITH CAGE
TWIN ELEMENT FUEL FILTER
FUEL / WATER SEPERATOR
SINGLE EXHAUST
HEAT SHIELD FOR EXHAUST
BORG WARNER FAN DRIVE
1,000 WATT ENGINE BLOCK HEATER
ENGINE OIL COOLER - INTEGRAL
HEAVY DUTY DRY AIR CLEANER
RESTRICTION INDICATOR - AIR CLEANER
ELECTRONIC FAST IDLE
HEAVY DUTY FRONT BUMPER
FRONT & REAR TOW HOOKS
TILT HOOD AND FENDERS, EASY TILT
AERO HALOGEN HEAD LAMPS
ALTERNATING FLASHING HEADLAMPS
DAYTIME RUNNING LIGHTS
DUAL ELECTRIC HORNS
LOW COLLANT ALARM
TRANSMISSION TEMPERATURE GAUGE
ENG. ALARM - LOW OIL PRESS / HIGH WATER TEMP.
BRAKE WARNING LAMP AND BUZZER
SPEEDOMETER AND ODOMETER
TACHOMETER AND VOLTMETER
HOURMETER / AMMETER
OIL PRESS / WATER TEMP / FUEL LEVEL GAUGES
ON BOARD IP DIAGNOSTIC DISPLAY

BODY

2010 IC/CE 7200 CONVENTIONAL – 33'5"
FMVSS BODY CONSTRUCTION
78" HEADROOM W / 12" WINDOW OPENINGS
DUAL ENTRANCE DOOR GRAB RAIL
FUEL DOOR W/NON LOCKING LATCH
ELECTRICAL ACCESS PANEL
ACCESS COVER-FUEL SENDER
ELEC. O/O ENT. DOOR W/VANDAL LOCK
DUAL DOOR CONTROLS LOCATED ON STEERING WHEEL
& LH SWITCH PANEL
OUTSIDE ASSIST HANDLE ON ENTRANCE DOOR
ALL VANDAL LOCKS KEYED ALIKE
REAR EMER. DOOR W / SLIDE BOLT VANDAL LOCK
& INTERLOCK
RETAINER FOR EMERGENCY DOOR
43" RH FRONT LIFT DOOR W/VANDAL LOCK & INTERLOCK
INSULATION – ROOF & SIDES 1 1/2"
INSULATION NOISE REDUCTION – ROOF BOWS
ACOUSTIC HEADLINER – FULL LENGTH
W/SOUND INSULATION – FULL LENGTH
HEADLINER FASTENED WITH SCREWS
14 GAUGE ROOF BOWS
16 GAUGE SKIRT PANELS
16 GAUGE SMOOTH SIDE PANELS

BODY

BODY UNDERCOAT – FIRE RESISTANT TTC
UNDERCOATED FLOOR, STEPWELL AND SIDES
4 EXTERIOR RUB RAILS
3-PIECE FLAT / TINTED WINDSHIELD – 73%
STATIC ROOF VENT
(1) SPECIALTY ROOF HATCH / VENT
(4) EMERGENCY PUSH OUT WINDOWS
WINDOW STOP LINES
LOWER GLASS – REAR EMERGENCY DOOR
2 AUXILIARY DEFROSTER FANS
MANUAL RESET CITCUIT BREAKERS
HEATER BOOSTER PUMP
HEATER CUT OFF VALVE
CONSTANT TORQUE CLAMPS – HEATER HOSES
DRIVER'S HEATER / DEFROSTER W/FILTER - 90,000 BTU
STEP WELL HEATER / DEFROSTER W/FILTER - 50,000 BTU
FULL WIDTH DEFROSTER
REAR HEATER W/FILTER - 2 FANS - 84,500 BTU
WEBASTO HEATER W / 7 DAY TIMER - 17,000 BTU
ARMORED CLEARANCE / CLUSTER LAMPS
7" AMBER DIRECTIONAL FRONT AND REAR
ARMORED SIDE DIRECTIONAL
7" REAR STOP/TAIL
4" BACK UP LAMPS
BACKUP ALARM 107db
PLASTIC LIGHT BARS
DUAL ROW DOME LAMPS – 2 SWITCHES
DOME LIGHT TIMER
DRIVERS DOME LAMP – SEPARATE SWITCH
ICC RED LAMP OVER REAR EMERGENCY DOOR
LIFT AREA DOME LAMP
LIFT DOOR BOARDING LIGHT
8 LAMP HALOGEN WARNING SYSTEM W/HOODS
8 WAYS OPERATE UP TO 55MPH
LOW PROFILE STROBE LAMP W/PILOT LIGHT
12 VOLT POWER SOCKET
BATTERY CUT OFF IN BATTERY COMPARTMENT
MAGNETIC BODY CUT-OFF SOLENOID
NOISE SUPPRESSION SWITCH
EXTERIOR LIGHT CHECK
POST TRIP INSPECTION MONITOR W/BUZZER
AM / FM / CD /PA RADIO W/WEATHER BAND & 4 SPEAKERS
OUTSIDE SPEAKER UNDER STEPWELL
DOOR SWITCH - STEP WELL LAMP
REAR DOOR BUZZER & PILOT LAMP
LIFT DOOR BUZZER & PILOT LAMP
LETTERING TO ILLINOIS / FEDERAL REQ.
POLYURETHANE EXTERIOR PAINT
PAINTED BLACK AROUND 8 WAY LAMPS
3M DIAMOND GRADE REFLECTIVE – SIDES & EXITS
3M DIAMOND GRADE SCHOOL BUS SIGNS – FRONT & REAR
DOT SB HB **SEATS WITH BELTS**
DOT SB HB BARRIERS
GRAY VINYL UPHOLSTERY
PADDED SHOULDER RAIL
NATIONAL 2000 DRIVERS SEAT W / FABRIC INSERT
DRIVERS 3 PT. SEAT BELT / WITH LOCKING RET. & ADJ. "D" LOOP
ENTRANCE / EMERGENCY / LIFT DOOR HEADER PADS
FRONT RUBBER MUD FLAPS
REAR RUBBER MUD FLAPS - ANTI SAIL – ANTI SPRAY
5/8" EXTERIOR GRADE PLYWOOD SUB FLOOR
BLACK KOROSEAL FLOOR AND STEPS
ALUMINUM AISLE TRIM
ABS MOLDED WHEELHOUSE
(1) 9 3/8" X 6" CERTIFICATE HOLDER
6 X 30 INSIDE MIRROR - PADDED
6 X 30 PLEXIGLASS SUN VISOR
ROSCO FLAT 9 X 17 CONVEX R/VIEW - MOTORIZED
ROSCO MINI HAWKEYE CROSS VIEW MIRRORS
ALL EXTERIOR MIRRORS HEATED
REFLECTORS AS REQUIRED
ELEC. HEATED STOP ARM - OCTAGON W / LIGHTS
WET ARM WASHER SYSTEM-6 QUART CAP.W/SINGLE SWITCH
ILLINOIS CERTIFICATION LABEL
SAFETY EQUIPMENT
ELECTRIC POLY CROSSING ARM W/INTERRUPT SWITCH
BRAUN NL 9191B WHEELCHAIR LIFT
2 SURE LOK WHEELCHAIR TIE DOWNS
VINYL WINTERFRONT



REVISION ONLY ON SYSTEM	
REV	DESCRIPTION
1	49MDM/49002
2	DX2879A002